



Key Features

- Ergonomic design permits effortless operation.
- Full color TFT LCD to display custom buttons, text, graphics, and animations.
- Integrated 802.11 WiFi.
- Integrated high-resolution touchscreen.
- Powerful 32-bit, 400MHz XScale processor.
- 32MByte of Flash Memory
- Tilt switch can automatically turn on backlight when picked up.
- Extremely bright, backlit display and keys with adjustable brightness.
- Stereo speakers.
- Thirteen assignable/programmable keys.
- Transmits IR and RF (or both - on a single button or within a macro).
- Optional RF receiver allows you to transmit through walls, cabinets, etc.
- Includes a Lithium-Polymer Battery and docking station.
- Completely customizable, programmable, and upgradeable.
- Extremely wide IR transmitting frequency range.
- Optional VESA mounting module with Power-Over-Ethernet and analog video inputs.
- Interchangeable front and back bezel colors.
- Integrated battery fuel gauge.
- Non-volatile Flash memory stores your program even when power is lost.
- Easy-to-use Windows based software for programming and customization.
- Field upgradeable firmware.
- USB Programming.

T4 Universal Controller

The T4 is RTI's flagship wireless controller – a culmination of many years of engineering and design experience. It provides the ideal solution for those who require the very best in wireless touchpanel control. Sleek and sophisticated, the T4 is the perfect compliment to today's flat panel televisions and high-end home theaters. The highly stylized design, user-friendly ergonomics, and intuitive operation all work together to provide the richest possible experience.

The T4 provides a self-contained control system for controlling audio/video components, lights, and other electronic systems in the home. It also displays wireless video (motion JPEG) and web pages - either full screen or in an adjustable window. With a TFT LCD, full VGA resolution, powerful 400MHz 32-bit MCU, 32MB of Flash memory, stereo speakers, and an expandable architecture, the T4 defines the state-of-the-art in touchpanel control.

Description

When it comes to control, the T4 has it all – direct IR control for stand-alone operation, RF output for control processor operation, WiFi for IP control and internet access, and even hard-wired Ethernet and analog video input options. The T4 design maintains the perfect balance between display size and resolution. At 6.4 inches the LCD is small enough to be a truly hand-held device, yet it provides the full VGA resolution necessary for displaying video windows and web pages. The T4 interface is fully programmable using RTI's TheaterTouch Designer™ software, making it easy to display custom buttons, text, graphics, and animations.

In addition to the limitless software customization, the T4 provides amazing hardware flexibility. The front and rear surfaces have replaceable color inlays, allowing you to change the appearance to fit your needs. You can even change the color of the buttons, or remove them all together. The flexibility of the T4 doesn't stop with a customizable appearance. Using the optional EM-4 expansion module, the T4 can actually be transformed into a hardwired VESA mountable touchpanel with Power-Over-Ethernet and dual analog video input ports. Additional RTI accessory devices provide the T4 with power sensing for reliable operation, and RS-232 communications for advanced control.

Call 952-253-3100
www.rticorp.com



Specifications

Power	7.2VDC, 4000 mAh Lithium-Ion Battery Pack
Power Management	Automatic On/Off (tilt switch)
Infrared Control Range	30 feet (9.1 meters) @ 60 degrees
Infrared Frequency Range	15kHz - 460kHz
Radio Frequency Range	Up to 100 feet (30.5 meters)
Radio Frequency Carrier	- 433 MHz (Control) - 2.4 GHz (802.11)
Touchscreen Display	- High-brightness color TFT LCD - Full VGA (640 x 480 pixels) with 65K colors - 300:1 contrast ratio - Integrated high-resolution touchscreen
Display Size (H x W)	6.4 in. (162mm) diagonal
Backlights	Dual CCFL 300nit (Display), Blue LED (Keypads)
Operating Temperature	+32° F to +122° F (0° C to 50° C)
Operating Humidity	5% to 95% Non-condensing
Total System Memory	32MByte Flash (non-volatile) memory
Device Capability	Total number of devices is limited only by memory
Macro Capability	- Up to 64 steps in a single macro - Total number of macros is limited only by memory - Macro capability on every button
Communications	USB programming port
Enclosure	High-impact molded ABS plastic, black/silver
Dimensions (H x W x D)	6.2" x 9.4" x 2.6"
Weight	2 lbs
Warranty	One Year (parts & Labor)

All specifications subject to change without notice.



7651 Anagram Drive, Eden Prairie, MN 55344
Ph: (952) 253-3100 • Email: info@rticorp.com

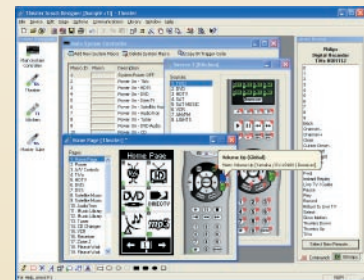
Accessories

- EM-4** Expansion Module
- RP-1** Remote Control Processor
- RP-6** Remote Control Processor
- RM-433** RF Receiver
- CM-232** Communication Module
- VPS-1** Voltage Power Sensor
- SPS-1** Video Sync Power Sensor



Other RTI Products

- T1** Universal System Controller
- T2+** Universal System Controller
- T3** Universal System Controller
- RK3** In Wall Universal Controller
- K4** In Wall Universal Controller
- U1** Waterproof Controller
- IR-PRO** Infrared Capture System



TheaterTouch Designer™ Programming Software

Call 952-253-3100
www.rticorp.com

