



Key Features

- Stylish low-profile faceplate with snap-on attachment.
- Integrated mounting wings for easy installation.
- Full color TFT LCD to display custom buttons, text, graphics, and animations.
- Integrated 10/100Base-T Ethernet port with Power-over-Ethernet.
- Plasma friendly infrared receiver for command pass-through.
- IR output port drives up to 1000 feet of wire.
- Two power status input ports.
- Integrated high-resolution touchscreen.
- Powerful 32-bit, 200MHz XScale processor.
- 32MByte of Flash Memory.
- Extremely bright, backlit display and keys with adjustable brightness.
- Nine assignable/programmable keys.
- Completely customizable, programmable and upgradeable.
- Non-volatile Flash memory stores your program even when power is lost.
- Easy-to-use Windows based software for programming and customization.
- Field upgradeable firmware.
- USB Programming.

RK3 Universal Controller

The RK3 is a compact color LCD touchpanel designed for flush-mount installations in walls or cabinets. It provides a self-contained control system for controlling audio/video components, lights, or other electronic systems in the home. It also displays digital video (motion JPEG) and web pages - either full screen or in an adjustable window.

The RK3 provides elegant and intuitive control of a home's entertainment, environment, security, and information systems. It is the only compact in-wall touchpanel that provides both direct infrared control and 10/100Base-T Ethernet for IP control. In addition, the RK3 is unique because its graphical user interface (GUI) and programming are completely customizable. In any situation, from simple to complex, the RK3 provides the perfect level of control.

Description

The RK3 is an advanced universal system controller that mounts in a wall. Its design maintains the perfect balance between display size and resolution. At 3.5 inches the LCD is small enough to blend into a room's interior, yet it provides the necessary resolution for displaying graphics such as digital photos, web pages, and CD cover artwork. The RK3 interface is fully programmable using RTI's TheaterTouch Designer™ software, making it easy to display custom buttons, text, graphics, and animations.

The RK3 can directly control almost any audio/video component or lighting system up to 1000 feet away using its infrared output port. In addition, the built-in Ethernet port allows the RK3 to display video from network security cameras, access the Internet, view and play songs stored on hard drive music servers, and control other devices on the network.

The RK3 can be used as a stand-alone device or as part of an expandable central control system. When used with the available RTI accessory devices, the RK3 is capable of infrared routing, relay control, power sensing, and RS-232 communications for advanced control.

Call 952-253-3100
www.rticorp.com



Specifications

Power	16 VDC, .5A max or Power-over-Ethernet
Power Management	Adjustable backlight brightness/power down time
Touchscreen Display	- High-brightness color TFT LCD - 1/4VGA (320 x 240 pixels) with 65K colors - Integrated high-resolution touchscreen
Display Size (H x W)	3.5 in. (89mm) diagonal
Backlights	White LED (Display), Blue/Amber LED (Keypad)
Infrared Output Port	200mA output Drives up to 1000 feet (300 meters) of wire
Ethernet Port	10/100Base-T with Power-over-Ethernet
Operating Temperature	+32° F to +122° F (0° C to 50° C)
Operating Humidity	5% to 95% Non-condensing
Total System Memory	32MByte Flash (non-volatile) memory
Device Capability	Total number of devices is limited only by memory
Macro Capability	- Up to 64 steps in a single macro - Total number of macros is limited only by memory - Macro capability on every button
Communications	USB programming port
Enclosure	High-impact molded ABS plastic, black
Front Plate	High-impact molded ABS plastic, white
Mounting	Integrated mounting wings, or screws through front bezel
Front Plate Dimensions (H x W)	5 3/4" (146mm) x 5 1/2" (140mm)
Installation Cut-Out (H x W)	5 1/8" (130mm) x 4 3/4" (120mm)
Total Depth in Wall	1 1/8" plus cables
Weight	10 oz
Warranty	One Year (parts & Labor)

All specifications subject to change without notice.



7651 Anagram Drive, Eden Prairie, MN 55344
Ph: (952) 253-3100 • Email: info@rticorp.com

Accessories

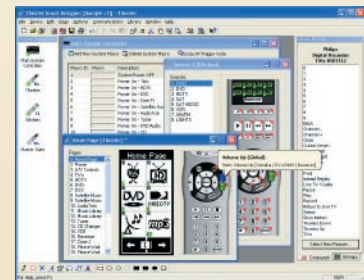
CB-4	Connecting Block
RP-6	Remote Control Processor
RM-433	RF Receiver
CM-232	Communication Module
VPS-1	Voltage Power Sensor
SPS-1	Video Sync Power Sensor



BZB-RK3	Black Colored Bezel
BZA-RK3	Almond Colored Bezel

Other RTI Products

T1	Universal System Controller
T2+	Universal System Controller
T3	Universal System Controller
T4	Universal System Controller
K4	In Wall Universal Controller
U1	Waterproof Controller
IR-PRO	Infrared Capture System



TheaterTouch Designer™ Programming Software

Call 952-253-3100
www.rticorp.com

